

Masterpiece Homes

OVERVIEW TOWNHOMES

Located in Maplewood

ONE LEVEL LIVING

BASE PRICE \$229,700

RAMBLER TOWNHOME 1652 SQ FT

*EASY AND CONVENIENT MAIN FLOOR LIVING.
OPEN FLOOR PLAN WITH WALKOUT BASEMENT.
FOUR SEASON PORCH FILLED WITH WINDOWS
AND ATTACHED DECK.*

2 BEDROOM, 2 BATH, SEPARATE/FORMAL DINING ROOM, EAT IN KITCHEN, CENTER ISLAND WITH JENN AIR DOWN DRAFT COOKTOP, VAULTED CEILINGS, CEILING FAN, WALK-IN CLOSET IN MASTER SUITE WITH DRESSING AREA, MAIN FLOOR LAUNDRY HAS TUB, CLOSET AND WASHER/DRYER HOOKUP, IN GROUND SPRINKLER SYSTEM, ATTACHED 2 CAR GARAGE.

623 SCHOOL DISTRICT - ROSEVILLE

NEAR SHOPPING CENTERS, MAPLEWOOD MALL, ROSEDALE MALL, GOLF COURSE AND RECREATION PARK IN MAPLEWOOD. EASY ACCESS TO FREEWAYS.

24 UNITS - WITH ONLY 2 REMAINING.

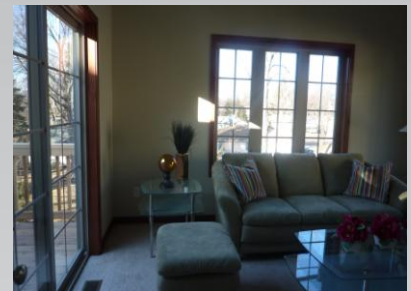
THIS IS A MUST SEE!

OUR MODEL HOURS ARE SAT-SUN 1PM-4PM

OR BY APPOINTMENT - CONTACT:

SUSAN
BUILDER REPRESENTATIVE
612-363-6830

331 Summer Place East



Where Quality Matters.